

# FMB640

Teltonika FMB640 is GNSS, GSM and Blue-tooth terminal for PROFESSIONAL applications. FMB640 is designed for complex solutions, where one device can do multiple tasks. FMB640 features like FMS CAN data (J1939), fuel CAN data (J1708), tachograph live data (K-Line), remote tachograph file download, various third party RS232 or RS485 devices support and Dual-SIM will maximize your fleet efficiency. Terminal is suitable for applications like international logistics, refrigerated transport, agriculture, construction & mining, security & emergency services and even more.

- RS232/RS485 – data from external devices – fulfill customer special needs
- Tacho data and DDD files – remote access to tacho data – saves time and expenses
- FMS/LV-CAN/ALL-CAN – CAN data from various transport – expand value for customer



## FLEET MANAGEMENT // FMB640





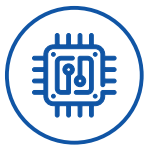
## Blue-tooth

Integrated Blue-tooth 4.0 LE allows usage of various wireless sensors and grants compatibility with previously available Blue-tooth V3.0 features like device configuration, firmware update, headset support. Retrieve temperature and humidity information from Blue-tooth sensors without the need of wired connection – reduce installation costs. Make phone calls to your employee via Blue-tooth headset – be sure that your employee is always safe and uses hands free headset instead of phone!



## Internal battery

Feel safe when vehicle is monitored by device with internal battery. When vehicle battery is disconnected, device still remains online and sends data to server.



## New generation processor

FMB640 powered by new generation processor which opens more opportunities for most demanding functionalities. New device will offer FMB configurator, FOTA Web, Crash trace, Custom scenario DOUT control compatibility.



## Dual SIM

Double GSM network reliability with Dual SIM! Even if your main SIM card fails to connect, FMB640 will stay online. Moreover, Dual SIM significantly reduces roaming costs, when using first SIM card for Home, second for Roaming data networks.



## RS232/RS485

RS232/RS485 functionality enables connection of third party devices like: multiple LLS sensors, GARMIN personal navigation device, RFID readers or some other RS232/RS485 devices.



## Integrated tachograph solution

Integrated tachograph solution enables remote tachograph file (DDD, V1B, C1B or TGD format) download and live tachograph info acquisition without any additional adapter. Easier than ever connection – less integration time.

## FMB640 USE CASES



### International logistics

Modern day logistics require a lot of information for business optimization, it is not enough to get current GPS coordinate of your vehicle location. With fuel consumption, driven distance and many other parameters you are able to monitor and regulate your fleet resources, this way all expenses would be accounted. With solution for driver activities monitoring you will have full control of your driver.



### Public transport

Public transport requires a lot of management. It is always important to know where vehicles are, how long they drive and rest – all this to achieve best efficiency. With fuel data and other various parameters you are able to monitor and control your fleet resources, thus cutting expenses to minimum. With solution for driver or even passenger monitoring you will have full information about people who were using your transport.



### Construction & mining

Probably most important aspect of construction machinery management is fuel consumption data. Powerful cranes and high capacity concrete mixers compared to light vehicles, use huge amounts of fuel during short periods of time – high chance of fuel theft if work time is accounted only on paper. Take full control of your fleet, workers and resources.



### Utility transport

Maintenance vehicles like salt spreaders or dustcarts are vitally important for modern city and its inhabitants. Management of such and other machinery requires vast amount of unusual data: sprinkling distance, covered spreading area, amounts and types of materials used, working hours and many more parameters, which are available with our solution.



### Agriculture

Agricultural machinery has advanced a lot in recent years, technology like modern tractors or harvesters usually costs more than a sports car – it is essential to keep track of such valuable assets. With our solution you will have full control of current position, driver activities and receive various information from harvesting machinery.

## FMB640 TECHNICAL DETAILS

GSM/GPRS features	Quad-band 900/1800 MHz; 850/1900 MHz GPRS Multi-Slot Class 12(up to 240 kbps) GPRS Mobile Station Class B SMS (text/data)
Blue-tooth	Blue-tooth specification V4.0 Blue-tooth transceiver fully compliant with Blue-tooth specification V4.0 for external peripherals: <ul style="list-style-type: none"><li>• Voice calls over Blue-tooth</li><li>• Configuration via Blue-tooth</li><li>• OBDII Blue-tooth dongle</li></ul>
GNSS	Tracking: 33/ 99 acquisition channels -165 dBm sensitivity Hot start <1s Warm Start < 25s Cold start < 35s NMEA-183 protocol GPS, GLONASS, GALILEO, BEIDOU, SBAS, QZSS, DGPS, AGPS Accuracy < 3m
Interface	Integrated KLINE Dual CAN J1939 J1708 CAN RS485 and 2x RS232 support 4 Digital Inputs for object status monitoring 4 Digital Open-collector Outputs (controlling external relays, LED, buzzers, etc.) 4 Analog Inputs 1-wire interface Ni-Mh 550 mAh internal battery MicroSD card 2 status LED Dimensions: L(104,1mm)xW(76,8mm)xH(31,5mm) Configuration and firmware update (via FOTA and USB cable) External GSM antenna for higher sensitivity External GNSS antenna for higher sensitivity